

Dolphin CT50 Computer - Configuration Guide

What are the options available on the Dolphin CT50?

Windows



CT50 WEH8.1 - 4G

CT50LUN-CS11SN0

Windows Embedded 8.1 Handheld, LTE (4G), UMTS/HSPA+ (3G), GSM/GPRS/EDGE, 802.11 a/b/g/n/ac, 1D/2D Imager (N6600), 2.26 GHz Quad-core, 2GB/16GB Memory, 8MP Camera, BT 4.0, NFC, Battery 4,040 mAh, India/Australia

CT50 WEH8.1 - WiFi Only

CT50L0N-CS11SN0

Windows Embedded 8.1 Handheld, 802.11 a/b/g/n/ac, 1D/2D Imager (N6600), 2.26 GHz Quad-core, 2GB/16GB Memory, 8MP Camera, BT 4.0, NFC, Battery 4,040mAh, India/Malaysia/Australia



CT50 Windows 10 IoT Mobile Enterprise - 4G

CT50LUN-CS14SN0

Windows 10 IoTME, LTE (4G), UMTS/HSPA+ (3G), GSM/GPRS/EDGE, 802.11 a/b/g/n/ac, 1D/2D Imager (N6600), 2.26 GHz Quad-core, 2GB/16GB Memory, 8MP Camera, BT 4.0, NFC, Battery 4,040 mAh, India/Australia

CT50 Windows 10 IoT Mobile Enterprise - WiFi Only

CT50L0N-CS14SN0

Windows 10 IoTME, 802.11 a/b/g/n/ac, 1D/2D Imager (N6600), 2.26 GHz Quad-core, 2GB/16GB Memory, 8MP Camera, BT 4.0, NFC, Battery 4,040 mAh, India/Malaysia/Australia

Honeywell Repair Services

SVCCT50-5FC3

CT50, Full Comprehensive, 5 Day Turnaround, 3 Year, DayOne

Dolphin CT50 Computer - Configuration Guide

Android



CT50 Android KitKat 4.4 - 4G

CT50LUN-CS13SN0	Android 4.4.4 KitKat/GMS, LTE (4G), UMTS/HSPA+ (3G), GSM/GPRS/EDGE, 802.11 a/b/g/n/ac, 1D/2D Imager (N6600), 2.26 GHz Quad-core, 2GB/16GB Memory, 8MP Camera, BT 4.0, NFC, Battery 4,040 mAh, India/Australia
-----------------	---------------------------------------------------------------------------------------------------------------------------------------------------------------------------------------------------------------

CT50 Android KitKat 4.4 - WiFi Only

CT50L0N-CS13SN0	Android 4.4.4 KitKat/GMS, 802.11 a/b/g/n/ac, 1D/2D Imager (N6600), 2.26 GHz Quad-core, 2GB/16GB Memory, 8MP Camera, BT 4.0, NFC, Battery 4,040mAh, India/Malaysia/Australia
-----------------	-----------------------------------------------------------------------------------------------------------------------------------------------------------------------------



CT50 Android Marshmallow 6.0 - 4G

CT50LUN-CS16SN0	Android 6.0/GMS, LTE (4G), UMTS/HSPA+ (3G), GSM/GPRS/EDGE, 802.11 a/b/g/n/ac, 1D/2D Imager (N6600), 2.26 GHz Quad-core, 2GB/16GB Memory, 8MP Camera, BT 4.0, NFC, Battery 4,040 mAh, India/Australia
-----------------	------------------------------------------------------------------------------------------------------------------------------------------------------------------------------------------------------

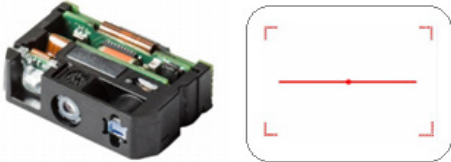
CT50 Android Marshmallow 6.0 - WiFi Only

CT50L0N-CS16SN0	Android 6.0/GMS, 802.11 a/b/g/n/ac, 1D/2D Imager (N6600), 2.26 GHz Quad-core, 2GB/16GB Memory, 8MP Camera, BT 4.0, NFC, Battery 4,040 mAh, India/Malaysia/Australia
-----------------	---------------------------------------------------------------------------------------------------------------------------------------------------------------------

Honeywell Repair Services

SVCCT50-5FC3	CT50, Full Comprehensive, 5 Day Turnaround, 3 Year, DayOne
--------------	------------------------------------------------------------

Dolphin CT50 Configuration Map

													Bluetooth/ WiFi	WWAN	NFC	—	Camera	Imager	Memory	Operating System	Battery	Language	Options	Description	Notes
CT50													L											802.11 a/b/g/n/ac + Bluetooth 4.0	
														U										LTE (4G), UMTS/HSPA+ (3G) GSM/GPRS/EDGE	WWAN Radio (EU) LTE (4G) Tri-Band (Bands 3, 7, 20) UMTS/HSPA+ (3G) Dual Band (Bands 1, 2, 5, 8) GSM/GPRS/EDGE (Quad Band (850/900/1800/1900MHz)
														F										LTE (4G), UMTS/HSPA+ (3G), GSM/GPRS/EDGE, 1xRTT/EV-DO	WWAN Radio (ATT / VZW / North America) LTE (4G) Quad Band (Bands 2, 4, 5, 17) UMTS/HSPA+ (3G) Quad Band (Bands 1, 2, 5, 8) GSM/GPRS/EDGE Quad-Band (850/900/1800/1900MHz) Dual Band 1xRTT/EV-DO (Bands BC0, BC1)
														0										No WWAN	
															N									Near Field Communication (NFC)	
																—									
																	C							8MP Camera	
																		S						1D/2D Imager (N6600)	
																			1					2GB RAM/16GB Flash Memory	
																				1				Windows Embedded 8.1 Handheld	
																								Android 4.4 KitKat/GMS	Google Mobile Services (GMS) certified – Play Store
																								Windows 10 IoT Mobile Enterprise	
																								Android 6.0 Marshmallow/ GMS	Google Mobile Services (GMS) certified – Play Store
																					S			Standard Battery	Battery Capacity 4,040mAh
																						E		Global	Use for New Zealand
																						F		US FCC	
																						N		India/Malaysia/Australia	Use for Australia
																							0	No Option	

Honeywell Repair Services

CT50 - Full Comprehensive Program

For Best-In-Class Service

Honeywell repair service programs not only protect your device investment, but also provide predictable repair costs for the duration of your agreement. In addition to repairs, with every depot service we also provide required preventative maintenance, install the latest engineering updates and reload the most up-to-date factory software.

You can take advantage of multiple services programs, including either the Full Comprehensive Program or the Limited Comprehensive Program, based on the product category and product type (general duty, rugged or specialty) of your devices. Or you may prefer the Wear & Tear Program for your Honeywell devices. With each program, you also get comprehensive telephone support and access to the Honeywell Scanning & Mobility online Technical Support Portal for product information.

Ensure business continuity, workflow performance and protection of your technology investments with Honeywell Repair Services — now available in over 70 countries with global pricing and global standards of quality.

With the Full Comprehensive Program, you get our highest level of protection for critical data-collection and mobile-computing devices, helping you protect your investments and avoid costly operational downtime.

Service Overview

- Comprehensive coverage (excluding device replacement) that covers accidental damage, wear and tear, damaged accessories, product defects, failures, and any other damage sustained when the device is used as intended in the work environment. (Coverage for eligible accessories includes damaged styluses, battery door covers, screen protectors, and hand straps or clips when included with equipment for service.)
- Locked-in pricing for coverage for up to three years from the initial hardware purchase. Note: Limited Comprehensive coverage must be purchased within 30 days of hardware purchase.
- Telephone-based technical support.
- Access to the Honeywell Scanning & Mobility online Technical Support Portal for the latest product and application support information.
- Convenient Online Return Authorization Requests with 24/7 access to online service history reports.
- Depot services include free preventive maintenance, installation of the latest engineering updates and re-loading of the current factory software (or your preferred version).

Part#	Description
SVCCT50-5FC3	CT50, Full Comprehensive, 5 Day Turnaround, 3 Year, DayOne
SVCCT50-5FC5	CT50, Full Comprehensive, 5 Day Turnaround, 5 Year, DayOne
SVCCT50-2FC3	CT50, Full Comprehensive, 2 Day Turnaround, 3 Year, DayOne

	WARRANTY	WEAR AND TEAR	LIMITED COMPREHENSIVE	FULL COMPREHENSIVE
Device Replacement	N	N	N	Y
Accidental Damage	N	N	Y	Y
Wear	N	Y	Y	Y
Hardware Defect	Y	Y	Y	Y
Turn Around Time	15 Days*	2 & 5 days	1, 2 & 5 days**	1, 2 & 5 days**
Duration	1 year	1, 3 & 5 Years	3 & 5 Years	3 & 5 Years

* Not guaranteed
** 1 day turn on select scanners

Dolphin CT50 Scanning

Option 1 – Scan Handle

Use for Scan intensive applications



	Part Number	Description
1	CT50-SCH	User installable scan handle for scan intensive applications. Easy on and Easy off to allow for recharging in CT50 desktop docks.

Dolphin CT50 Desktop Communications

Option 1 – Portable

USB Communication OR Snap-On Charging



Part Number	Description
1	CT50-USB
2	213-029-001

Snap-on cup with Standard Type A connector.
Kit includes AC Power Adapter Kit (US, EU, UK, ANZ) & USB Cable

Option 2 – Fixed

USB and optional Ethernet Communication & Single Battery Charger



Part Number	Description
1	CT50-HB-0
OR	CT50-EB-0
2	321-576-004
3	**

HomeBase - Kit includes Dock & Power Supply, must order Power Cord separately
eHomeBase – Ethernet Kit includes Dock & Power Supply, must order Power Cord separately
Cable Assembly - USB Type A to Type B
AC Power Cord – See Page 11 for Country Specific Power Cords

Dolphin CT50 Vehicle Install

Option 1 – Portable/ Sub Contractor Install

Simple Vehicle Charging, portable between vehicles



Part Number	Description
1	CT50-MC Snap-on cup with Cigarette Lighter plug.

Option 2 – Portable/ Sub Contractor Install

Windscreen Suction Cup Mount, portable between vehicles.



Part Number	Description
1	CT50-MB-1 Vehicle Dock w/ hard wired 3-pin power cable and a standard USB Type A cable (Kit Includes: CT50-MC-Cable - Auto Adapter, V-Docks, 3S Circular, RoHS)
2	RAM-B-166-202U Suction Cup Mount Kit

Honeywell Repair Services

SVCCT50ACC-5LC3	CT50 Accessories, Limited Comprehensive, 5 Day Turnaround, 3 Years
-----------------	--------------------------------------------------------------------

Dolphin CT50 Vehicle Install

Option 3 – Fixed Vehicle Install with Direct Connection to Vehicle Battery/ Fuse Block

Best used when the vehicle input voltage varies, 10- 30V.



	Part Number	Description
1	CT50-MB-0	Vehicle Dock w/ hard wired 3-pin power cable and a standard USB Type A cable.
2	226-109-003	72" (182.88 cm) Fuse block Power Cable with spade lugs and 3-pin connector
OR	226-109-004	22" (55.8 cm) Fuse block Power Cable with spade lugs and 3-pin connector
3	805-611-001	Mounting Kit, V-Dock RoHS
	203-803-001	Vehicle Dock Fuse Block Power Kit RoHS (Provides connection to vehicle fuse block). Requires Power Cable (226-109-003 or 226-109-004).

Honeywell Repair Services

SVCCT50ACC-5LC3 CT50 Accessories, Limited Comprehensive, 5 Day Turnaround, 3 Years

Dolphin CT50 Vehicle Install

Option 4 – Fixed Vehicle Install with DC/DC Converter

Best used when the vehicle input voltage varies, 6-60V or 15-96V.



	Part Number	Description
1	CT50-MB-0	Vehicle Dock w/ hard wired 3-pin power cable and a standard USB Type A cable.
2	203-808-001	DC/DC Converter Kit, <u>6-60V</u> DC, RoHS
OR	203-809-001	DC/DC Converter Kit, <u>15-96V</u> DC RoHS
3	805-611-001	Mounting Kit, V-Dock RoHS

Honeywell Repair Services

SVCCT50ACC-5LC3 CT50 Accessories, Limited Comprehensive, 5 Day Turnaround, 3 Years

Dolphin CT50 Charging and Communications

Option 1 – CT50 Quad Charger

Chargebase – Quad Dock Charge Only
Netbase – Quad Dock with Ethernet



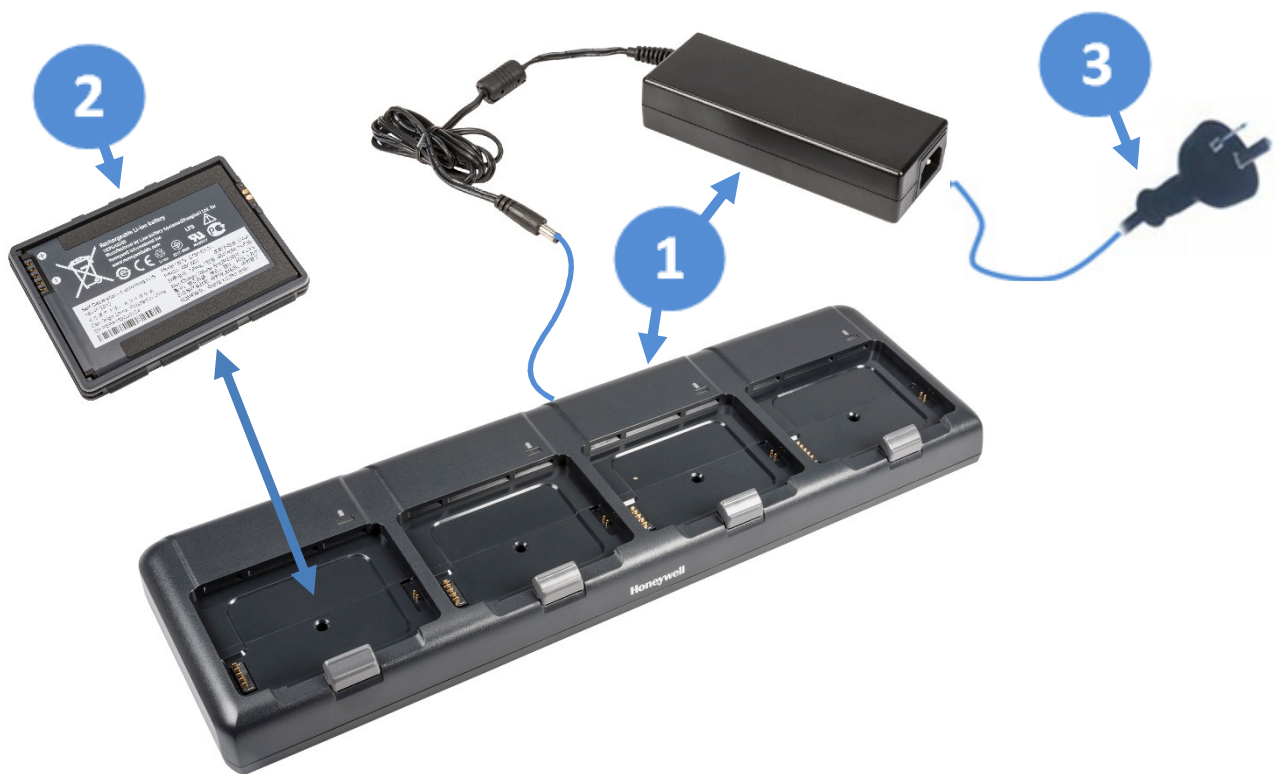
Part Number	Description
1	CT50-CB-0 Chargebase - Kit includes Dock and Power Supply
OR	CT50-NB-0 Netbase - For Ethernet comms and recharging upto 4 computers.
2	** AC Power Cord – See Page 11 for Country Specific Power Cords

Honeywell Repair Services

SVCCT50ACC-5LC3 CT50 Accessories, Limited Comprehensive, 5 Day Turnaround, 3 Years

Option 2 – Battery Charger

Charge up to 4 batteries simultaneously



Part Number	Description
1	CT50-QBC-0 Quad Battery Charger - Kit includes Dock and Power Supply
2	318-055-001 Replacement Battery for CT50
3	** AC Power Cord – See Page 11 for Country Specific Power Cords

Honeywell Repair Services

SVCCT50ACC-5LC3 CT50 Accessories, Limited Comprehensive, 5 Day Turnaround, 3 Years

Miscellaneous

CT50 Accessories



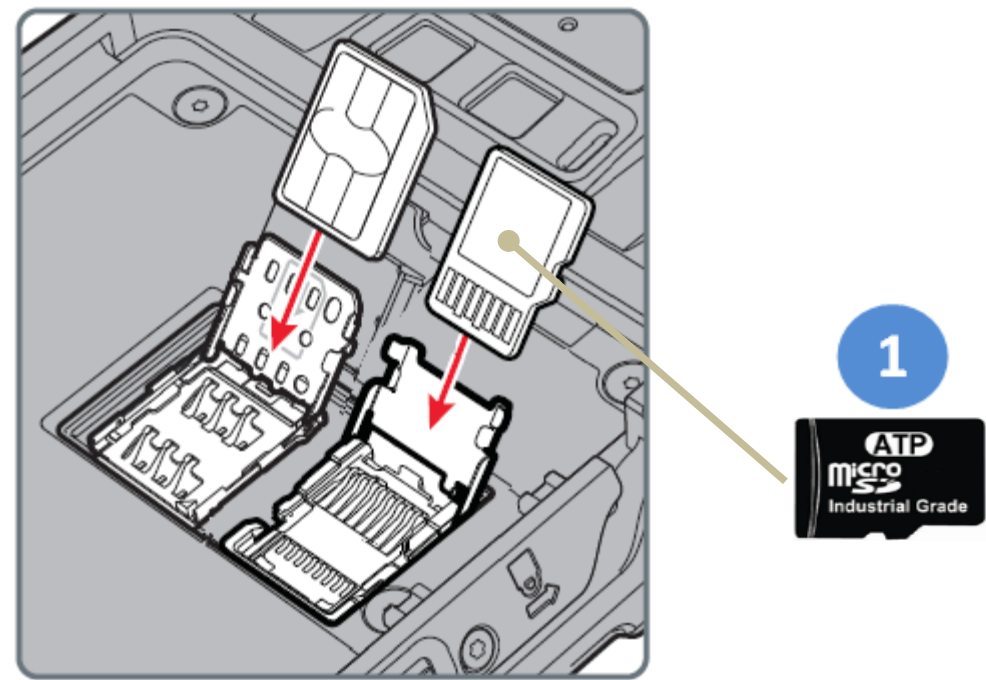
Part Number	Description
213-049-001	Pack of three CT50 replacement handstraps



Part Number	Description
213-048-001	Pack of five CT50 replacement styluses.

Miscellaneous

Honeywell Recommended – ATP Industrial Grade Micro SD Cards



	Part Number	Description
	1	856-065-004 MICRO-SD CARD, <u>1GB</u> , AF1GUDI, ROHS
OR		856-065-005 MICRO-SD CARD, <u>2GB</u> , AF2GUDI, ROHS
OR		856-065-006 MICRO-SD CARD, <u>4GB</u> , AF4GUDI, ROHS
OR		856-065-007 MICRO-SD CARD, <u>8GB</u> , AF8GUDI, RoHS

Why ATP Industrial Grade SD?

ATP's SIP (System-In-Packaging) manufacturing process encapsulates all exposed components and points of failure to ensure the products are fully waterproof, shockproof, and ESD (Electro-Static Discharge) proof. ATP Industrial Grade SD/SDHC Cards can withstand at least an operating/storage temperature range of at least -40 to 85 degrees Celsius. In addition to this temperature range, the cards are completely waterproof, dustproof, and ESD (Electro-Static Discharge) proof. All ATP Industrial Grade SD/SDHC cards are produced under a stringent RoHs and Green Package compliant manufacturing process to guarantee a consistent high level of build quality and performance. ATP Industrial SD cards deliver outstanding performance with read speed (seq) up to **18MB/sec** and write speed (seq) up to **16MB/sec**. All ATP Industrial Grade CF, SD, USB drives, and SSDs are constructed using best-in-class SLC(Single-Level Cell) components with enhanced Error Correction Code(ECC) functions and wear levelling algorithms. This results in MTBF ratings over 2 million hours and the highest write cycle lifetimes in the industry.

AC Cords

Part Number	Description
9000097CABLE	AC Power Cord, Australia
071918	AC Power Cord, China
9000091CABLE	AC Power Cord, Denmark
9000090CABLE	AC Power Cord, Europe
321-502-002	AC Power Cord, India & South Africa
9000092CABLE	AC Power Cord, Italy
321-500-002	AC Power Cord, Japan
9000093CABLE	AC Power Cord, Switzerland
9000094CABLE	AC Power Cord, United Kingdom
1-974028-025	AC Power Cord, United States

Operating System Upgrade Licenses

Upgrade the CT50 Android or Windows Operating System (OS) to a newer release.
Upgrade Android KitKat 4.4 → Marshmallow 6.0
Upgrade Microsoft Windows Windows Embedded 8.1 Handheld → Windows 10 IoT ME

Android Upgrade

KitKat 4.4

Marshmallow 6.0



454-076-001 Single user license for Android 6.0 on Dolphin CT50 or 75e

Microsoft Windows Upgrade

Windows Embedded 8.1 Handheld

Windows 10 IoT ME



454-075-001 Single user license for Windows 10 IoT Mobile Enterprise on Dolphin CT50 or 75e

Disclaimer

Honeywell International Inc. ("HII") reserves the right to make changes in specification and other information contained in this document without prior notice, and the reader should in all cases consult HII to determine whether any such changes have been made. The information in this publication does not represent a commitment on the part of HII.

HII shall not be liable for technical or editorial errors or omissions contained herein; nor for incidental or consequential damages resulting the furnishing, performance, or use of this material.

This document contains proprietary information that is protected by copyright. All rights are reserved. No part of this document may be photocopied, reproduced, or translated into another language with-out prior written consent of HII.

Web Address: www.honeywellaidc.com

The Bluetooth trademarks are owned by Bluetooth SIG, Inc., U.S.A and licensed to Honeywell.

Other product names mentioned in the manual may be trademarks of registered trademarks of their respective companies and are the property of their respective owners.

© 2016 Honeywell International Inc. All rights reserved.